

Customer :

customer

Customer part :

customer part

Comment :

Comment

S1=0.71

S2=11.79

Tmax=441

Tp S2=480.0

PI=0.06

HI=233

Sample =9107

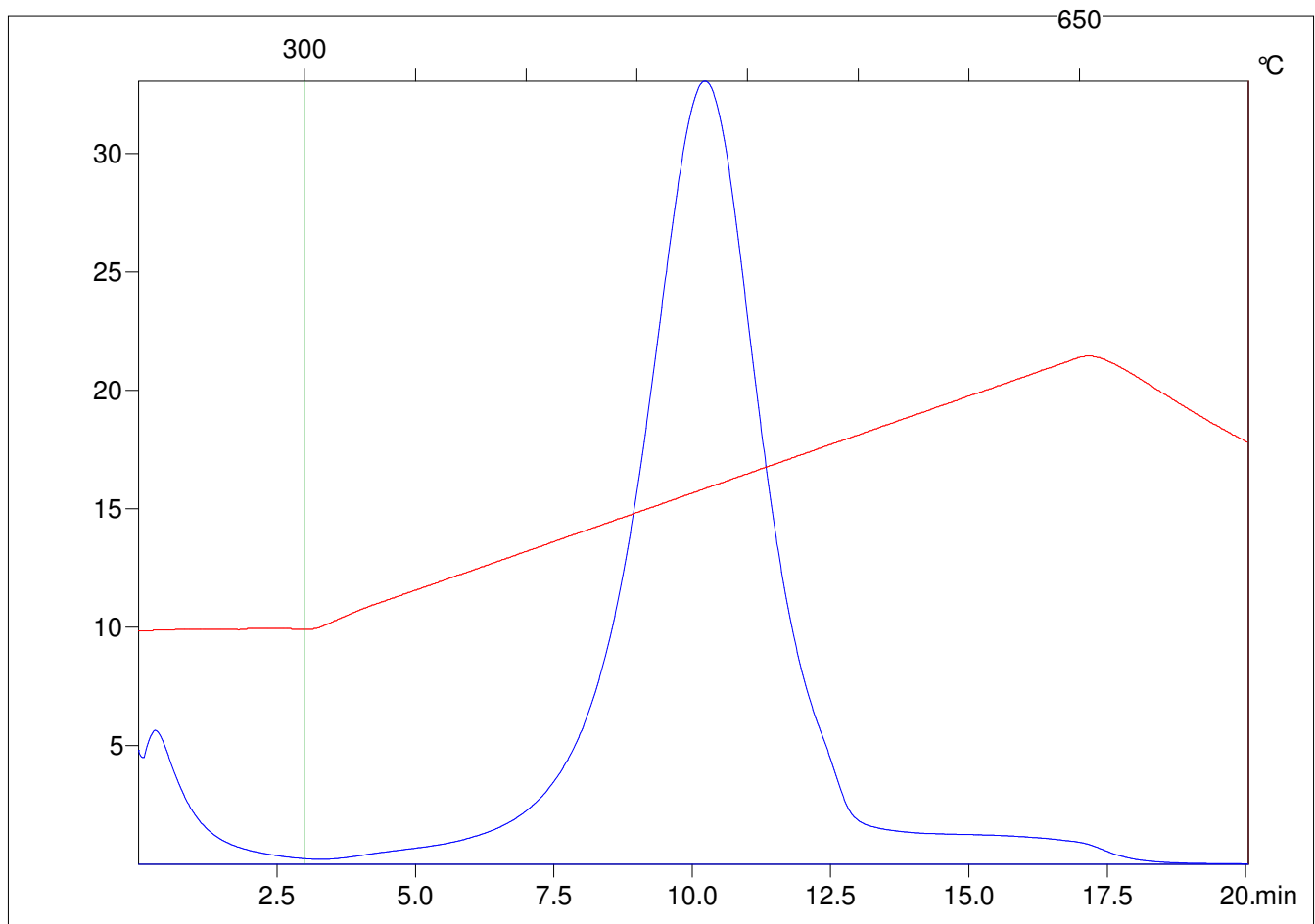
Method =Bulk Rock

Cycle=Basic

KFID(10\*9)=1444

Qty =70.4

TOC=5.05



C:\VINC\PK3\_1792\PK015.R00 : FID pyrolysis graphic

State

Pyro Status

Oxi Status